

HOSE CRIMPING MACHINES

YES

YOU CAN



Parker KarryKrimp®

Need to replace a faulty hose assembly?

Site too far from a ParkerStore and out of range of a Hose Doctor Service?

Just one solution: a KarryKrimp mobile crimper – simple to operate, cost-effective and built to provide years of dependable service.

In a few minutes, your machinery will be running again and the problem is solved.

So take a Parker KarryKrimp with you and keep your site working.

For more information or to locate your nearest ParkerStore, visit www.parkerstore.com.



Apex Fluid Power Ltd.

Phone: 01228 511157

www.apexfluid.co.uk

For hose fittings: Parkrimp® crimp fittings

- Description:**
- MiniKrimp® crimps one and two steel wire or textile braided hoses from size -04 up to size -16.
- Fitting series:**
- 48 (rubber hoses).
 - 55, 56, 58, 91N, EH (thermoplastic hoses).
 - This machine cannot crimp 43 series stainless steel fittings.
- Dimensions:**
- L 127 mm x W 178 mm x H 394 mm.
- Weight:**
- 16 kg.
- Set up time:**
- 20 sec.
- Applications:**
- Used for service with handpump (see p. 520) and die rings (see p. 516, 523).
- Restrictions:**
- Not suitable for multispiral hoses or two-piece fittings.
 - Not suitable for regular crimping of size -12 and size -16 hoses.

94C - MiniKrimp® - Hose crimping machine for small sizes up to size -16



Part number
94C-001-PFD

61 Parker DirectLink
66 Parker DirectLink

82C-R - Die ring for MiniKrimp®



Part number	Colour
82C-R01	Silver
82C-R02	Black

61 Parker DirectLink
66 Parker DirectLink

TOOLING & ACCESSORIES

80C-T - Die set for MiniKrimp® - 91N series fittings



61 Parker Direct Link

66 Parker Direct Link

Part number	Inside Diameter	
	inch	Size
80C-T04N	1/4	-04
80C-T05N	5/16	-05
80C-T06N	3/8	-06
80C-T08N	1/2	-08
80C-T10N	5/8	-10
80C-T12N	3/4	-12
80C-T16N	1	-16

Die set are colour-coded to ease identification

80C-P - Die set for MiniKrimp® - 56 series fittings



61 Parker Direct Link

66 Parker Direct Link

Part number	Inside Diameter		For hose type
	inch	Size	
80C-P03	3/16	-03	520N/528N/540N/1202LT
80C-P03F	3/16	-03	2040N
80C-P04	1/4	-04	520N/528N/540N/1202LT/2040N
80C-P05	5/16	-05	520N/528N/540N/1202LT
80C-P05F	5/16	-05	2040N
80C-P06	3/8	-06	520N/528N/540N/1202LT/2040N
80C-P08	1/2	-08	520N/528N/540N/2040N

Description:	<ul style="list-style-type: none"> • KarryKrimp® crimps one and two steel wire or textile braided hoses from size -4 up to size -20. • Press with hand pump, hose assembly and 2 die rings.
Fitting series:	<ul style="list-style-type: none"> • 48 (rubber hoses). • 55, 56, 58, 91N, EH (thermoplastic hoses).
Dimensions:	<ul style="list-style-type: none"> • H 686 mm x W 380 mm x D 305 mm.
Weight:	<ul style="list-style-type: none"> • 23 kg (82CE-061). • 18 kg (82C-061).
Die rings:	<ul style="list-style-type: none"> • 82C, see page 523.
Restrictions:	<ul style="list-style-type: none"> • Not suitable for multispiral hoses or two piece fittings.

82CE - KarryKrimp® 1 - Crimping press with air hydraulic pump

Part number	Details
82CE-061	KarryKrimp® 1 (with hand pump, die rings, hose assembly)
82CE-003	KarryKrimp® 1 (with air-hydraulic pump 82CE-OAP, die rings and hose assembly)



61 Parker DirectLink
66 Parker DirectLink

TOOLING & ACCESSORIES

Description:	<ul style="list-style-type: none"> • KarryKrimp® 2 crimps*: <ul style="list-style-type: none"> - One and two steel wire - Textile braided hoses up to size -20 - Three steel wire braided hoses up to size -16 - 4SP multispiral hoses up to size -16 - 4SH multispiral hoses up to size -16 - Six steel wire multispiral hoses up to size -16.
Fitting series:	<ul style="list-style-type: none"> • 26,43,46,48,70,73,78 (rubber hoses). • 55, 56, 58, 91N, EH (thermoplastic hoses).
Dimensions:	<ul style="list-style-type: none"> • H 762 mm x W 356 mm x D 381 mm (with stand).
Weight:	<ul style="list-style-type: none"> • 46 kg.
Die rings:	<ul style="list-style-type: none"> • 85C, see page 523.
Applications:	<ul style="list-style-type: none"> • Used for service with hand pump, air-hydraulic and electrical pump.
Restrictions:	<ul style="list-style-type: none"> • Not suitable for multispiral hoses sizes -20, -24 and -32. • Not for two-piece fittings.

* Complete with hose assembly and quick coupling, 2 die rings and dismantable stand.

85CE - KarryKrimp® 2 - Portable crimper for braided and multispiral hoses



61 Parker
Direct Line

66 Parker
Direct Line

Part number	Details
85CE-061	KarryKrimp® 2 (with hand pump, die rings and hose assembly)
85C-061	KarryKrimp® 2 (without pump but with die rings and hose assembly)
85CE-003	KarryKrimp® 2 (with air-hydraulic pump, die rings and hose assembly)

Operating pressure:	• Max. 70 MPa.
Dimensions:	• L 395 mm x W 148 mm x H 145 mm.
Weight:	• 5.3 kg.
Connection:	• Hydr. 3/8-18NPTF thread, Air 1/4-18NPTF thread.

82CE-OAP - Air / Hydraulic Pump



Part number

82CE-OAP

61 Parker Direct Link

66 Parker Direct Link

Operating pressure:	• Max. 70 MPa.
Dimensions:	• L 539 mm x W 417 mm x H 151 mm.
Weight:	• 11.6 kg.
Lever Force:	• 55 kg.
Tank capacity:	• 2294 cm ³ .

85CE-OHP - Hand pump



Part number

85CE-OHP

61 Parker Direct Link

66 Parker Direct Link

Description:	<ul style="list-style-type: none">• Hose assembly to connect either hand pump or air-hydraulic pump to the press.
Operating pressure:	<ul style="list-style-type: none">• Max. 700 bar (10153 psi).
Dimensions:	<ul style="list-style-type: none">• L 1830 mm.
Port size:	<ul style="list-style-type: none">• 1 3/8-18NPT male.• 2 3/8" coupling.

82C-00L - Hose assembly



Part number

82C-00L

61
Parker
Direct Link

66
Parker
Direct Link



- Operating pressure: • 70 MPa.
- Dimensions: • L 320 mm x W 320 mm x H 480 mm.
- Weight: • 8.4 kg.
- Tank capacity: • 662 cm³.

85C-0AP - Turbo air pump

Part number	Compressed-air supply
85C-0AP	1/4 18NPTF thread



61 Parker
OverLok

66 Parker
OverLok

- Operating pressure: • 70 MPa with 3/2 hand valve.
- Dimensions: • L 320 mm x W 320 mm x H 480 mm.
- Weight: • 12 kg.
- Tank capacity: • 2000 cm³.
- Connection: • Single phase / 230 V.

82CE-0EP - Power pump

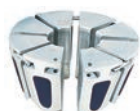
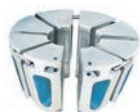
Part number
82CE-0EP



61 Parker
OverLok

66 Parker
OverLok

Parkrimp® - Die Sets



Part number	Hose Inside Diameter		Connection series
	DN	Size	
80C-E04	-04	-06	26
80C-A04	-04	-06	43
80C-B04	-04	-06	46
80C-C04	-04	-06	48
80C-E05	-05	-08	26
80C-A05	-05	-08	43
80C-B05	-05	-08	46
80C-C05	-05	-08	48
80C-E06	-06	-10	26
80C-A06	-06	-10	43
80C-B06	-06	-10	46
80C-C06	-06	-10	48
83C-D06	-06	-10	70
83C-D06	-06	-10	71
80C-E08	-08	-12	26
80C-A08	-08	-12	43
80C-B08	-08	-12	46
80C-C08	-08	-12	48
83C-D08	-08	-12	70
83C-D08	-08	-12	71
80C-E10	-10	-16	26
80C-A10	-10	-16	43
80C-B10	-10	-16	46
80C-C10	-10	-16	48
83C-D10	-10	-16	70
83C-D10	-10	-16	71
80C-E12	-12	-20	26
80C-A12	-12	-20	43
80C-B12	-12	-20	46
80C-C12	-12	-20	48
83C-D12	-12	-20	70
83C-D12	-12	-20	71
83C-L12 or 80C-L12	-12	-20	73/78/79
80C-E16	-16	25	26
80C-A16 or 83C-A16H	-16	25	43
80C-B16	-16	25	46
80C-C16 or 83C-C16H	-16	25	48
83C-D16 or 83C-D16H	-16	25	70
83C-D16 or 83C-D16H	-16	25	71
83C-L16 or 80C-L16	-16	25	73/78/79
83C-E20	-20	-32	26
80C-A20 or 83C-A20H	-20	-32	43
80C-B20	-20	-32	46
80C-C20 or 83C-C20H	-20	-32	48
83C-D20 or 83C-D20H	-20	-32	70
83C-D20 or 83C-D20H	-20	-32	71
83C-L20	-20	-32	73/78/79
83C-E24	-24	40	26
83C-A24	-24	40	43
83C-D24	-24	40	70
83C-D24	-24	40	71
83C-L24	-24	40	73/78/79
83C-E32	-32	50	26
83C-A32	-32	50	43
83C-C32	-32	50	48
83C-D32	-32	50	71
83C-L32	-32	50	73/78/79

61 Parker Die/Link

66 Parker Die/Link

- Description:**
- TH3-3 Cut-off machine cuts:
 - One and two steel wire.
 - Wire-braided hoses, up to size -32.
 - Four steel wire multispiral hoses up to size -32.
 - Six steel wire multispiral hoses up to size -20.
 - Blade covered during use.
- Dimensions:**
- H 370 mm x W 650 mm x D 580 mm (with hand lever H 1050 mm).
- Weight:**
- 75 kg.
- Electrical power:**
- 400 V - 3.7 KW - 50 Hz - 16 A.
- Exhaust system:**
- 50 mm diameter.
- Suction flow:**
- 400 m³/h.
- Restrictions:**
- Cutting 6 layer multispiral hoses will reduce the service life of the blade.

TH3-3 - Cut-off machine



61 Parker Direct Link
66 Parker Direct Link

Part number	Replacement blade part number	Serrated blade	
		part number	diameter
TH3-3	T891180	T905871	350 mm x 3 mm x 30 mm

Machine with standard smooth blade
Diameter: 350 mm x 3 mm x 30 mm

- Description:**
- TH3-2 Cut-off machine cuts:
 - One and two steel wire.
 - Wire-braided hoses, -20.
 - Four steel wire multispiral hoses up to size -16.
- Dimensions:**
- W 650 mm x D 420 mm x H 300 mm (with hand lever H 1050 mm).
- Weight:**
- 50 kg.
- Applications:**
- For mobile service vehicles with 12 V supply.
- Restrictions:**
- Not suitable for large hose sizes or multispiral hose.

TH3-2 - Cut-off machine



61 Parker Direct Link
66 Parker Direct Link

Part number	Replacement blade part number
TH3-2-12VDC	T891179

Machine with standard smooth blade
Diameter: 275 mm x 3 mm x 30 mm

Description:	<ul style="list-style-type: none"> EM Small hose-cutting machine cuts: <ul style="list-style-type: none"> - Textile or one steel wire braided hoses up to size -16. - Two steel wire braided hoses up to size -12.
Dimensions:	<ul style="list-style-type: none"> L 360 mm x W 340 mm x H 310 mm.
Weight:	<ul style="list-style-type: none"> 6.9 kg.
Electric motor:	<ul style="list-style-type: none"> Circular saw motor 230 V, 50/60 Hz, 900 W, 4400 Rpm.
Cutting disc:	<ul style="list-style-type: none"> TM 150 x 2.5 x 20 mm (HSS).
Electrical shielding:	<ul style="list-style-type: none"> According to VDE KI.II 0740.
Radio shielding:	<ul style="list-style-type: none"> According to VDE 0875.
Applications:	<ul style="list-style-type: none"> Can be used on a workbench or in or vice bench. Blade protected by a safety cover during use. Equipped with an electrical safety switch.
Restrictions:	<ul style="list-style-type: none"> Not suitable for all multispiral hoses or industrial hose in large sizes from -20 to -32.

EM - Small hose-cutting machine



Part number	Cutting blade, smooth part number
EM 10.P	TM 160 x 2,5 x 20

61 Parker
Direct Link

66 Parker
Direct Link